

Inox 304/316

Platte kop, Rond

Inox 304/316

Tête plate, Cylindrique



Technische informatie: zie p. 34

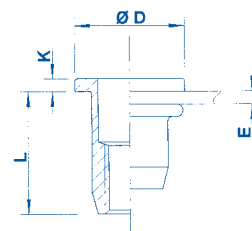
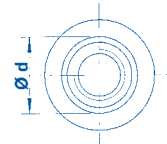
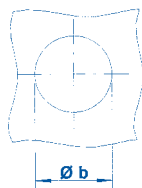
Information technique: voir p. 34

UPO/SPO

Open

UPO/SPO

Ouvert



Schroefdraad Filetage	Type	b ^{+0,1} mm	d mm	E mm	D mm	K mm	L mm	Code		Aantal Quantité min.
								304	316	
M4	UPO 20	6,0	6,0	0,5 - 2,0	9,0	1,0	11,0	544 010	554 010	500
	UPO 35			2,0 - 3,5			12,5	544 020		500
M5	UPO 30	7,0	7,0	0,5 - 3,0	10,0	1,0	11,5	545 040	555 040	500
	UPO 50			3,0 - 5,0			15,0	545 050		500
M6	UPO 30	9,0	9,0	0,5 - 3,0	12,0	1,5	14,5	546 020	556 020	500
	UPO 50			3,0 - 5,0			16,5	546 035	556 035	500
	UPO 70			5,0 - 7,0			18,5	546 050*	556 050	500
M8	UPO 30	11,0	11,0	0,5 - 3,0	15,0	1,5	16,0	548 010	558 010	500
	UPO 55			3,0 - 5,5			18,5	548 020	558 020*	500
	UPO 70			4,5 - 7,0			20,0		558 030	500
M10	UPO 30	12,1	12,0	0,8 - 3,0	15,0	1,0	18,5	540 020		100
	UPO 50			3,0 - 5,0			20,5	540 030		100
M10	SPO 35	13,0	13,0	0,8 - 3,5	17,0	1,5	21,5	540 600	550 600	100
	SPO 60			3,5 - 6,0			24,0	540 605		100

* op aanvraag

* sur demande

Inox 304/316

Platte kop, Rond

Inox 304/316

Tête plate, Cylindrique



Technische informatie: zie p. 34

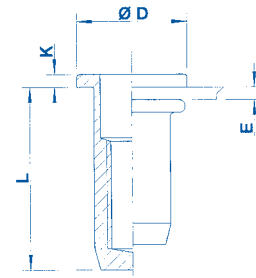
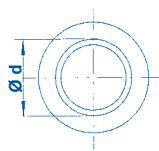
Information technique: voir p. 34

UPX/SPX

Gesloten

UPX/SPX

Fermé



Schroefdraad Filetage	Type	$b^{+0,1}$	d	E	D	K	L	Code		Aantal Quantité
		mm	mm	mm	mm	mm	mm	304	316	min.
M4	UPX 20	6,0	6,0	0,5 - 2,0	9,0	1,0	15,0	544 110	554 110	500
M5	UPX 30	7,0	7,0	0,5 - 3,0	10,0	1,0	17,5	545 180	555 180	500
M6	UPX 30	9,0	9,0	0,5 - 3,0	12,0	1,5	21,5	546 100	556 100	500
	UPX 50			3,0 - 5,0			23,5	546 105	500	
M8	UPX 30	11,0	11,0	0,5 - 3,0	15,0	1,5	23,5	548 065	558 065	500
	UPX 55			3,0 - 5,5			26,0	548 066	500	
M10	SPX 35	13,0	13,0	0,8 - 3,5	17,0	1,5	28,5	540 630		100

Inox 304/316

Platte kop, Semi-zeskant



Inox 304/316

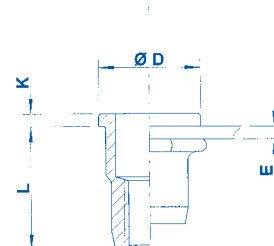
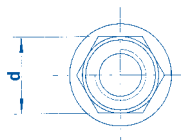
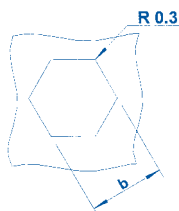
Tête plate, Semi-hexagonal

Technische informatie: zie p. 34

Information technique: voir p. 34

HUPO
Open

HUPO
Ouvert



Schroefdraad Filetage	Type	$b^{+0,1}$	d	E	D	K	L	Code		Aantal Quantité min.
		mm	mm	mm	mm	mm	mm	304	316	
M4	HUPO 20	6,0	6,0	0,5 - 2,0	9,0	1,0	11,0	544 500	554 500	500
M5	HUPO 30	7,0	7,0	0,5 - 3,0	10,0	1,0	11,5	545 500	555 500	500
M6	HUPO 30	9,0	9,0	0,5 - 3,0	12,0	1,5	14,5	546 460	556 460	500
M8	HUPO 30	11,0	11,0	0,5 - 3,0	15,0	1,5	16,0	548 250	558 250	500
	HUPO 55			3,0 - 5,5			18,5	548 270	558 270	500

Inox 304/316

Platte kop, Semi-zeskant



Inox 304/316

Tête plate, Semi-hexagonal

Technische informatie: zie p. 34

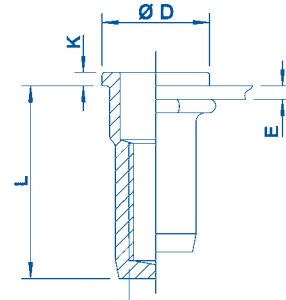
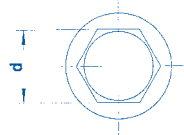
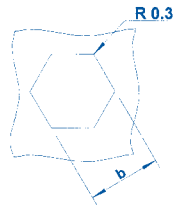
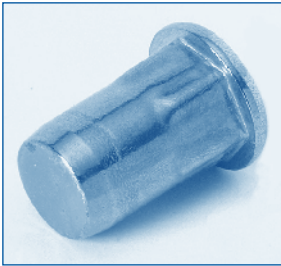
Information technique: voir p. 34

HUPX/HSPX

Gesloten

HUPX/HSPX

Fermé



Schroefdraad Filetage	Type	$b^{+0,1}$	d	E	D	K	L	Code		Aantal Quantité
		mm	mm	mm	mm	mm	mm	304	316	min.
M4	HUPX 20	6,0	6,0	0,5 - 2,0	9,0	1,0	15,0	544 520	554 520	500
M5	HUPX 30	7,0	7,0	0,5 - 3,0	10,0	1,0	17,5	545 520	555 520	500
M6	HUPX 30	9,0	9,0	0,5 - 3,0	12,0	1,5	21,5	546 470	556 470	500
M8	HUPX 30	11,0	11,0	0,5 - 3,0	15,0	1,5	23,5	548 260	558 260	500
M10	HSPX 35	13,0	13,0	0,8 - 3,5	17,0	1,5	28,5	540 635		100

Inox 304/316

Verzonken kop, Rond

Inox 304/316

Tête fraisée, Cylindrique



Technische informatie: zie p. 34

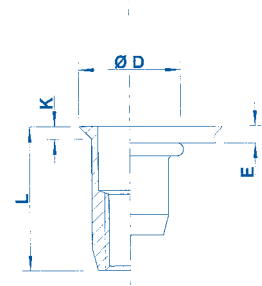
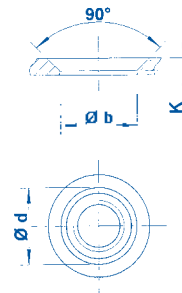
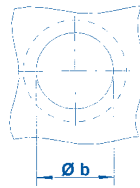
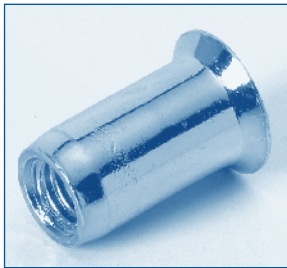
Information technique: voir p. 34

UFO/SFO

Open

UFO/SFO

Ouvert



Schroefdraad Filetage	Type	$b^{+0,1}$	d	E	D	K	L	Code		Aantal Quantité
		mm	mm	mm	mm	mm	mm	304	316	min.
M4	UFO 30	6,0	6,0	1,2 - 3,0	8,0	1,0	12,0	554 120		500
M5	UFO 35	7,0	7,0	1,2 - 3,5	9,0	1,0	12,0	545 200		500
M6	UFO 45	9,0	9,0	1,7 - 4,5	12,0	1,5	17,0	546 125	556 125	500
M8	UFO 45	11,0	11,0	1,7 - 4,5	14,0	1,5	17,5	548 070	558 070	500
	UFO 65			4,5 - 6,5			19,5	548 075	500	
M10	UFO 45	12,1	12,0	1,7 - 4,5	15,0	1,5	20,0	540 090		100
M10	SFO 45	13,0	13,0	1,7 - 4,5	16,0	1,5	22,5	540 610		100

Inox 304/316

Gereduceerde verzonken kop, Rond



Inox 304/316

Tête fraisée réduite, Cylindrique

Technische informatie: zie p. 34

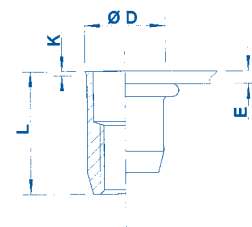
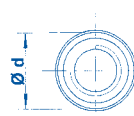
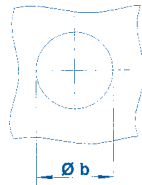
Information technique: voir p. 34

UKO/SKO

Open

UKO/SKO

Ouvert



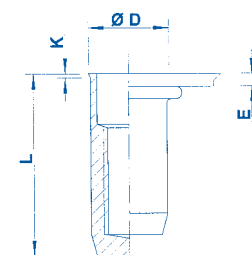
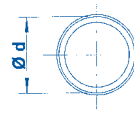
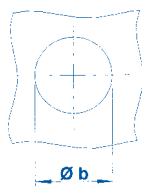
Schroefdraad Filetage	Type	$b^{+0,1}$	d	E	D	K	L	Code		Aantal Quantité
		mm	mm	mm	mm	mm	mm	304	316	min.
M4	UKO 20	6,0	6,0	0,5 - 2,0	6,5	0,5	11,0	544 220	554 220	500
M5	UKO 30	7,0	7,0	0,5 - 3,0	7,5	0,5	12,0	545 400	555 400	500
	UKO 50			3,0 - 5,0				545 420	555 420	
M6	UKO 30	9,0	9,0	0,5 - 3,0	9,5	0,5	14,5	546 400	556 400	500
M8	UKO 30	11,0	11,0	0,5 - 3,0	11,5	0,5	16,0	548 160	558 160	500
	UKO 55			3,0 - 5,5				548 180	558 180	
M10	SKO 35	13,0	13,0	0,8 - 3,5	13,5	0,5	21,0	540 620	550 620	100

UKX

Gesloten

UKX

Fermé



Schroefdraad Filetage	Type	$b^{+0,1}$	d	E	D	K	L	Code		Aantal Quantité
		mm	mm	mm	mm	mm	mm	304	316	min.
M4	UKX 20	6,0	6,0	0,5 - 2,0	6,5	0,5	15,0	544 250	554 250	500
M5	UKX 30	7,0	7,0	0,5 - 3,0	7,5	0,5	18,0	545 450	555 450	500
M6	UKX 30	9,0	9,0	0,5 - 3,0	9,5	0,5	21,5	546 450	556 450	500
M8	UKX 30	11,0	11,0	0,5 - 3,0	11,5	0,5	24,0	548 190	558 190	500

Inox 304/316

Gereduceerde verzonken kop, Semi-zeskant

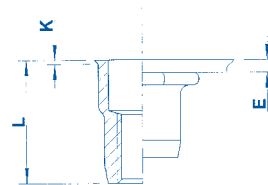
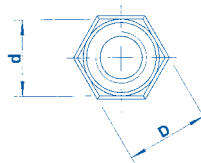
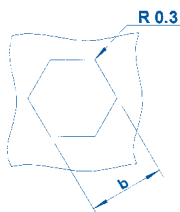


Inox 304/316

Tête fraisée réduite, Semi-hexagonal

Technische informatie: zie p. 34

Information technique: voir p. 34

HUKO
OpenHUKO
Ouvert

Schroefdraad Filetage	Type	$b^{+0,1}$	d	E	D	K	L	Code		Aantal Quantité min.
		mm	mm	mm	mm	mm	mm	304	316	
M4	HUKO 20	6,0	6,0	0,5 - 2,0	6,5	0,5	11,0	544 600	554 600	500
M5	HUKO 30	7,0	7,0	0,5 - 3,0	7,5	0,5	12,0	545 600	555 600	500
	HUKO 50			3,0 - 5,0				545 605	500	
M6	HUKO 30	9,0	9,0	0,5 - 3,0	9,5	0,5	14,5	546 500	556 500	500
	HUKO 50			3,0 - 5,0			16,5	546 525	500	
	HUKO 70			5,0 - 7,0			18,5	546 580*		
M8	HUKO 30	11,0	11,0	0,5 - 3,0	11,5	0,5	16,0	548 300	558 300	500
	HUKO 55			3,0 - 5,5			18,5	548 305	500	

* op aanvraag

* sur demande

Inox 304/316

Gereduceerde verzonken kop, Semi-zeskant

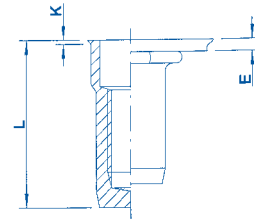
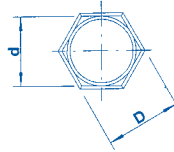
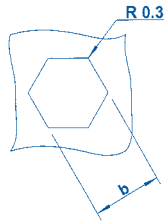
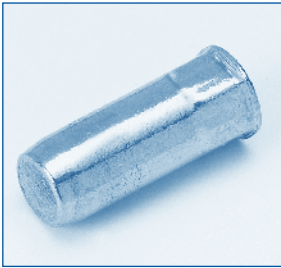


Inox 304/316

Tête fraisée réduite, Semi-hexagonal

Technische informatie: zie p. 34

Information technique: voir p. 34

HUKX**Gesloten****HUKX****Fermé**

Schroefdraad Filetage	Type	$b^{+0,1}$	d	E	D	K	L	Code		Aantal Quantité
		mm	mm	mm	mm	mm	mm	304	316	min.
M4	HUKX 20	6,0	6,0	0,5 - 2,0	6,5	0,5	15,5	544 620	554 620	500
M5	HUKX 30	7,0	7,0	0,5 - 3,0	7,5	0,5	18,0	545 620	555 620	500
	HUKX 50			3,0 - 5,0				545 640	555 640	500
M6	HUKX 30	9,0	9,0	0,5 - 3,0	9,5	0,5	21,5	546 540	556 540	500
	HUKX 50			3,0 - 5,0				546 565	556 565	500
M8	HUKX 30	11,0	11,0	0,5 - 3,0	11,5	0,5	24,0	548 320	558 320	500
	HUKX 55			3,0 - 5,5				548 340	558 340	500

Inox 304/316

Platte kop, Semi-zeskant



Inox 304/316

Tête plate, Semi-hexagonal

Technische informatie: zie p. 34

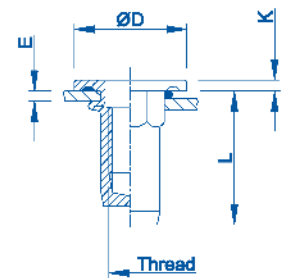
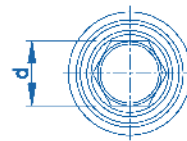
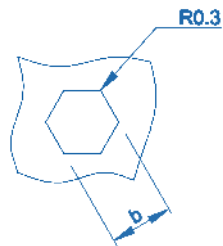
Information technique: voir p. 34

HX

Gesloten - Waterdicht 10 bar

HX

Fermé - Etanche 10 bar



Schroefdraad Filetage	Type	$b^{+0,1}$	d	E	D	K	L	Code		Aantal Quantité
		mm	mm	mm	mm	mm	mm	304	316	min.
M5	HX 3001	7,0	7,0	0,5 - 3,0	13,5	1,5	19,0	545 905	555 905*	500
M6	HX 3001	9,0	9,0	0,5 - 3,0	16,0	1,5	21,5	546 903*	556 903*	
M8	HX 3001	11,0	11,0	0,5 - 3,0	21,0	2,0	25,0	548 902*	558 902*	

* op aanvraag

* sur demande