

**Programme  
in development**

## ANTI-TURN Tubtara®

Round shank  
Anti-turn head  
Open / closed end  
Steel, stainless, aluminium

High torque values  
Easy to prepare  
Easy to install



New Development

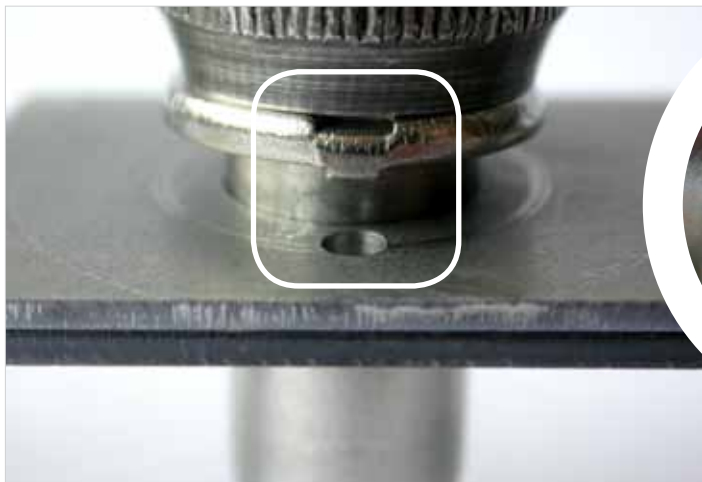
**Torque-to-turn value at least twice as high  
as that of the equivalent round blind rivet nut**

### ● Applications

All applications where hexagonal holes are not allowed or difficult to make

### ● Important advantages

- very effective on slippery surfaces
- no damage of the surface ( ↔ splined blind rivet nuts)
- very effective in hard material ( ↔ splined blind rivet nuts)
- use of standard round holes, so no risk of cracks on the corners ( ↔ hexagonal blind rivet nuts)
- easy to install with a standard setting tool
- no problem to set automatically
- possible to combine different material of nut and sheet ( ↔ welding nuts)
- technical details: see pages 8 and 9





## Steel

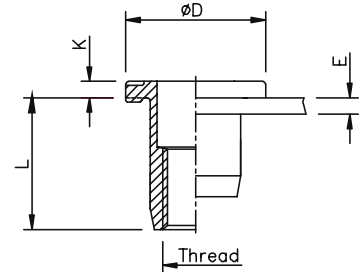
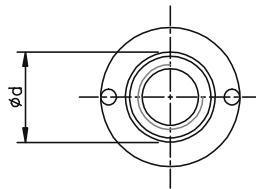
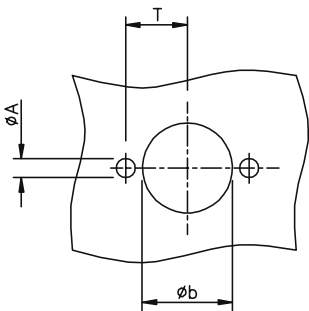
Anti-turn head  
Round shank  
Open end

Zinktop, Cr<sup>VI</sup> - free

**ATO**

**Extra high torque-to-turn values**

New Development



THREAD	TYPE	E = grip	L	b <sup>+0,1</sup> = drill dia	d = shank dia	D	K	A	T	kg/1000	ORDER CODE	BOX Q
M6	ATO30	0,5-3,0	14,5	9,0	9,0	14,0	1,5	1,8	6,25	4,6	526 1029*	1750
M8	ATO30	0,5-3,0	16,0	11,0	11,0	17,0	2,0	2,3	7,5	7,4	528 1022*	1200
M10	ATO35	0,8-3,5	21,0	13,0	13,0	19,0	2,0	3,0	8,75	11,4	520 1609*	750

Tool to position Ø A:

M6	AT 206
M8	AT 208
M10	AT 210



Programme in development (see also pages 6,7 and 9)  
Availability and other versions: please contact our Sales Department

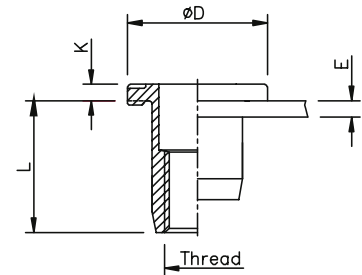
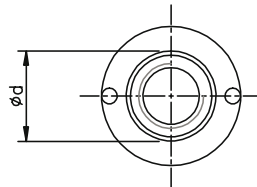
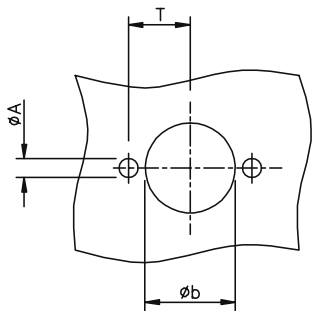
All dimensions in mm  
Technical data subject to modification



**Extra high torque-to-turn values**

**Stainless Steel 304**

Anti-turn head  
Round shank  
Open end  
**ATO**



New Development

THREAD	TYPE	E = grip	L	b <sup>+0,1</sup> = drill dia	d = shank dia	D	K	A	T	kg/1000	ORDER CODE	BOX Q
M6	ATO30	0,5-3,0	14,5	9,0	9,0	14,0	1,5	1,8	6,25	-	-	-
M8	ATO30	0,5-3,0	16,0	11,0	11,0	17,0	2,0	2,3	7,5	7,4	548 1010*	1200
	ATO55	3,0-5,5	18,5								548 1020*	1000
M10	ATO35	0,8-3,5	21,0	13,0	13,0	19,0	2,0	3,0	8,75	11,3	540 1600*	750

Tool to position Ø A:

M6	AT 206
M8	AT 208
M10	AT 210



*Programme in development (see also pages 6,7 and 8)  
Availability and other versions: please contact our Sales Department*

*All dimensions in mm  
Technical data subject to modification*

